



HEALTH & SAFETY POLICY

January 2026

CONTENTS

PART 1 HEALTH, SAFETY, WELFARE

Health, Safety, Welfare Environmental Policy Statement

PART 2 COMPANY ORGANISATION AND RESPONSIBILITIES

Company Organisational Chart - Management Structure

RESPONSIBILITIES

All Employees

Managing Director

Director Responsible for Health & Safety

Company Employees

Safety Adviser

Company Competent Person

PART 3 GENERAL ARRANGEMENTS (SAFETY MANAGEMENT PROCEDURES)

- 1.0 Arrangements - Systems and Procedures
- 2.0 Arrangements for Implementing the Procedures
 - 2.1 Fire Safety
 - 2.2 Risk Assessment
 - 2.3 Welfare and First Aid
 - 2.4 Accident Procedures
 - 2.5 Statutory Notifications of Accidents and Dangerous Occurrences
 - 2.6 Workplace Equipment Maintenance
 - 2.7 Personal Protective Equipment (PPE)
 - 2.8 Electricity
 - 2.9 Premises
 - 2.10 Control of Substances Hazardous to Health
 - 2.11 Contractors
 - 2.12 Alcohol and Drug Abuse
 - 2.13 Company Smoking Policy
 - 2.14 Working at Height
 - 2.15 Vibration at Work
 - 2.16 Stress
 - 2.17 Asbestos
 - 2.18 Computers

HEALTH AND SAFETY POLICY

STATEMENT of INTENT

1. Elite Pest Management Ltd (known as the Company) recognises its Health and Safety duties under the Health and Safety at Work Act 1974, the Management of Health & Safety at Work Regulations 1999 and accompanying protective legislation, and the Director, Mr Mick Kilburn, recognises that he has a responsibility to ensure that all reasonable precautions are taken to provide and maintain working conditions which are safe, healthy and comply with all statutory requirements and codes of practice.
2. The Company, so far as is reasonably practicable, proposes to pay particular attention to:
 - 🌀 The provision and maintenance of a safe place of work, a safe system of work, safe appliances for work, and a safe and Healthy working environment.
 - 🌀 The provision of such information and instruction as may be necessary to ensure the Health and Safety of its employees and others, and the promotion of awareness and understanding of Health and Safety throughout the workforce.
 - 🌀 Ensuring the Safety and absence of Health Risks in connection with use, handling, storage and transport of all articles, substances and equipment.
 - 🌀 Making Regular Assessments of Risks to employees
 - 🌀 Taking appropriate preventative/protective measures and
3. In order that the Company can achieve those objectives, it is important that employees recognise their duty, whilst at work, to take reasonable care for the Health and Safety of themselves and of other persons. Employees should also co-operate fully with the Company or anyone else concerned, to ensure that their obligations are performed or complied with.
4. All employees of the Company agree, as a term of their contract of employment, to comply with their individual duties under the Health and Safety at Work Act 1974, and the Management of Health and Safety Regulations 1999 and other legislation's, and to generally co-operate with the Company so as to enable it to carry out its duties towards them. The attention of all employees is drawn to the attached Safety rules and procedures, and employees should recognise that failure to comply with their Health and Safety duties and obligations can lead to dismissal from employment. In the case of serious breaches, such dismissal may be instant without prior warning.
5. This policy has been prepared in furtherance of section 2(3) of the Health and Safety at Work Act 1974 and binds all staff. We request that our customers and visitors respect this policy, a copy of which can be obtained on demand.

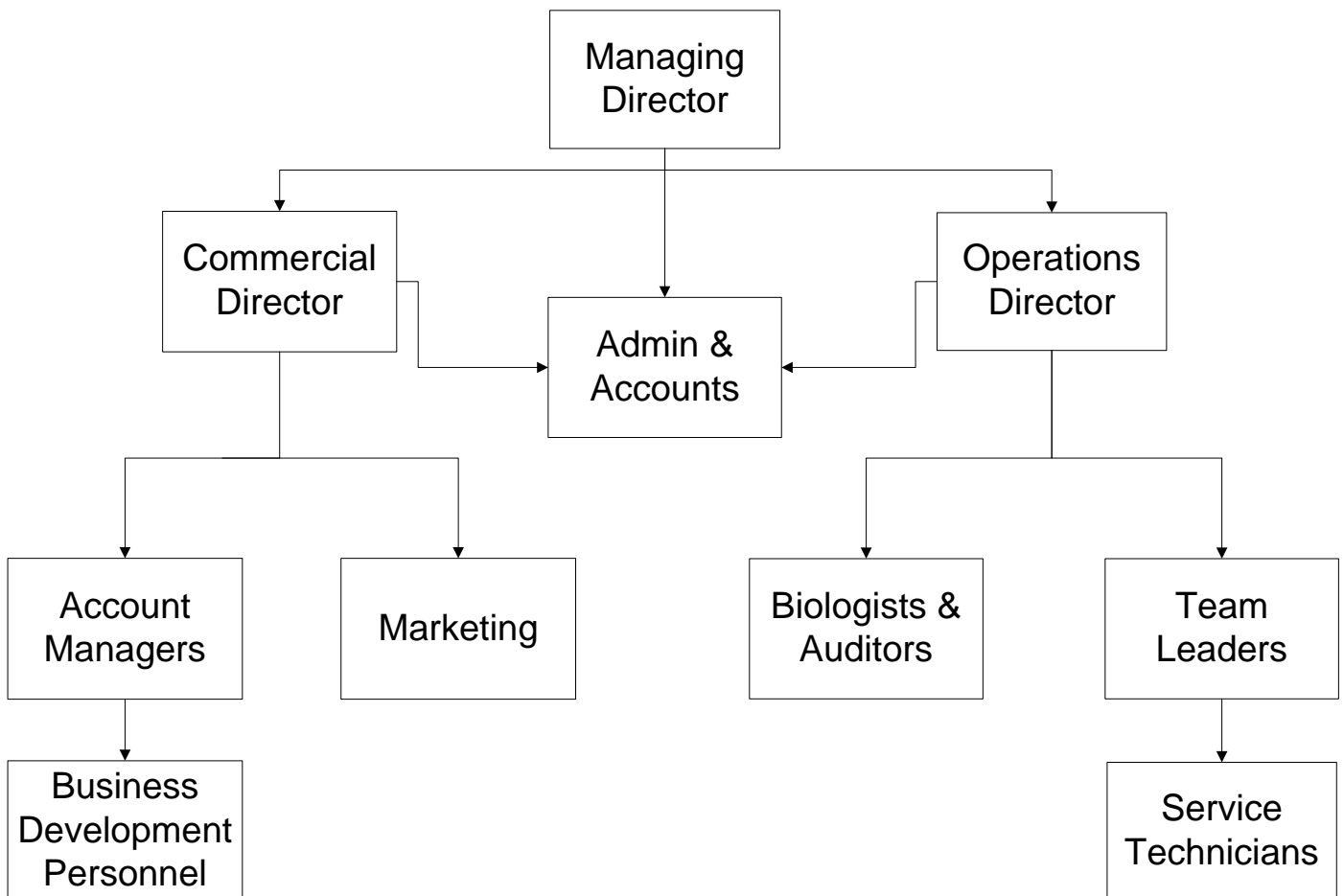


Mick Kilburn
Managing Director
January 2026

PART II

ORGANISATION COMPANY ORGANISATION FOR Health & Safety

Competent person for Health and Safety (Reg. 7 of MHSW Regulations 1999 refers) is



RESPONSIBILITIES

Elite Pest Management Ltd has responsibilities under Health and Safety legislation towards:

- 🕒 Employees
- 🕒 Customers, Visitors and the Local Community
- 🕒 Members of the Public
- 🕒 Contractors/Sub Contractors

The Company's obligations can only be met by ensuring that all employees fully discharge their responsibilities.

EVERY EMPLOYEE MUST:

- 🕒 Take reasonable care for the Health and Safety of themselves, and others who may be affected by their acts or omissions at work
- 🕒 Co-operate with management with regard to agreed Health and Safety arrangements and procedures
- 🕒 Know and keep to the rules and procedures relating to their work and report to their immediate supervisor all difficulties or hazards liable to endanger themselves or other persons
- 🕒 Not interfere with, or misuse, anything provided by the employer in the interest of Health, Safety and Welfare
- 🕒 If involved in an accident resulting in, or which may have resulted in, injury report the details to their immediate supervisor as soon as possible, and in all cases before the end of the shift on which the incident occurs
- 🕒 Arrange for any spillage of dangerous substance or flammable liquid to be dealt with immediately having due regard to the nature of such spillage
- 🕒 Use machinery and equipment only when authorised and properly trained to do so
- 🕒 Wear or use correctly all protective clothing and equipment issued to them and get replacements for lost, damaged or defective items

DIRECTORS RESPONSIBLE FOR HEALTH AND SAFETY

The Directors who have overall responsibility for Health & Safety are responsible for ensuring that the Policy enables the Company to fulfil its legal duties and emphasises the determination to manage its activities so that standards of Health and Safety are continuously improved. The Directors will monitor conditions and the Health and Safety performance to determine whether the policy is adequately resourced, effective and is being developed to meet changing requirements.

The Directors are responsible for ensuring that:

- ② Safe systems of work are in operation, and staff receive adequate and appropriate Training
- ② All personnel are aware of, and instructed in, their individual legal responsibilities, and that these are properly discharged
- ② All work carried out, and all plant, machinery and equipment complies with the Health and Safety at Work Act 1974, the Management of Health and Safety at Work Regulations 1999 and the Provision and Use of Work Equipment Regulations 1998
- ② All plant, machinery and equipment is maintained in good working order, and any registered plant and small equipment carries valid certification
- ② Information on Safety, Health and Welfare matters is effectively communicated to all Employees
- ② All staff are conversant with the Company and Health and Safety Executive accident reporting procedure (RIDDOR)
- ② Adequate First-Aid facilities are available in accordance with current Regulations, and suitable persons are trained in first aid to the required standard
- ② Periodic Statutory Tests, Inspections and Maintenance of premises and equipment are carried out and records are properly maintained
- ② Fire Precautions and Portable Appliances are in place and are Tested, Maintained, and kept up to date with the latest legislative requirements
- ② All staff are acquainted with the Emergency Evacuation Procedures and Emergency Plan
- ② Suitable Personal Protective Equipment (PPE) is available, issued and in use
- ② Staff are competent to carry out their work safely, and have received adequate information, instruction and training
- ② A personal example is set by the wearing of appropriate protective clothing
- ② All potential hazards, or reported hazards, are examined and evaluated and then eliminated or adequately controlled

- 🌀 The following statutory notices are displayed:
 - a) A signed copy of the Health and Safety Policy Statement of Intent
 - b) Employers liability insurance certificate
 - c) Health and Safety Law poster
 - d) First Aid (notifying the names and locations of the First- Aiders)
 - e) Fire exit signs (with directional signs and running person).

- 🌀 The following documentation is held:
 - a) Accident incident book (BI510)
 - b) F2508 accident reporting forms.

- 🌀 Health and Safety improvement suggestions received from staff are given due consideration

COMPANY EMPLOYEES

To include all employees:

Responsible for:

- 🌀 Health & Safety on a day to day basis – implementation of Health and Safety procedures, precautions and controls;
- 🌀 Undertaking Risk Assessments within their department; (Give Guidance)
- 🌀 Ensuring and encouraging the highest possible standards of Health & Safety within their department by effective communication and consultation with employees;
- 🌀 Monitoring standards of Health and Safety within their areas of concern;
- 🌀 Ensuring good standards of housekeeping;
- 🌀 Ensuring COSHH Risk Assessments are carried out within the area of their responsibility
- 🌀 The provision and maintenance of suitable personal protective equipment;
- 🌀 Ensuring staff attend fire training sessions;
- 🌀 Carrying out hazard spotting checks of their department; and
- 🌀 Assessing and meeting Health & Safety training needs.

SAFETY ADVISER

As required by Regulation 7 of “The Management of Health and Safety at Work Regulations”, Our industry trade organisation, The BPCA, is in association with CQMS who can be contacted to advise and assist on all related Health, Safety and Welfare issues relating specifically to our business undertakings. Through our current subscriptions, The BPCA and CQMS can be contacted to advise on the following:

- ② Advise on the application and maintenance of our Company Health and Safety Policy arrangements.
- ② Maintain an up-to-date knowledge in matters of legislation and Regulations as they apply and affect the Company and its Health and Safety Policy.
- ② Advise the Directors on any related Safety matters.
- ② Monitor the Company’s Health and Safety status by regular visits to site and ensuring our compliance with current legislation and our company policy and standards.
- ② Maintain a close liaison with the Health and Safety Executive Inspectors and other appropriate organisations and departments relevant to our undertaking.
- ② Advise Company Directors on training requirements for employees ensuring they are competent to carry out detailed tasks within the parameters of current Safety legislation.
- ② Carry out regular site visits and advise management on the implementation arrangements of the Health and Safety policy.
- ② Advise on the training requirements for employees, especially new starters, specifically formal Safety awareness training and site induction training.

PART III

ARRANGEMENTS

1. Systems and Procedures

Elite Pest Management Ltd recognise the importance of Health, Safety and Welfare, and will adopt a systematic approach towards ensuring that a Healthy and safe environment is provided and maintained for all employees and other persons who could be affected by our work activities.

Equally important is the need for constant alertness by the Directors Responsible for Health and Safety and employees in identifying and eliminating potential hazards wherever possible.

It is our primary objective that in conducting our activities, account must be taken by all parties of the need to:

- 🌀 Formulate and maintain safe working systems, including work carried out during maintenance
- 🌀 Take all necessary steps to establish the causes of accidents and Risks to Health, which may occur, and to ensure that reasonable measures are taken to prevent recurrence
- 🌀 Ensure that no process, chemical or equipment is introduced unless it complies (where required) with statutory testing or examination requirements; also to ensure that, so far as is reasonably practicable, the Health and Safety of employees etc. Will not be affected
- 🌀 Provide proper and adequate induction and training to ensure that all employees are fully competent in safe working methods applicable to their work
- 🌀 Encourage the closest possible liaison between the Company and employees in matters relating to Health and Safety
- 🌀 Ensure that all legal requirements relating to our activities are fully complied with, and progressively improve upon the levels of Health and Safety performance
- 🌀 Consult with employees, and advise them of their legal duties and responsibilities, including the requirement to:
 - 🌀 Abide by safe working systems
 - 🌀 Make use of facilities and equipment provided for their protection
 - 🌀 Refrain from any act which could endanger themselves or others
 - 🌀 Refrain from intentionally or recklessly interfering with, or misusing, anything provided in the interests of Health Safety and Welfare
 - 🌀 Report any known defect, which could endanger the Health or Safety of themselves or others
 - 🌀 Co-operate as far as is necessary to ensure that we meet our legal requirements.

2. Arrangements for Implementing Policy

2.1 Fire

A written Risk Assessment in accordance with the Regulatory Reform (Fire Safety) Order 2005 (FSO) will be undertaken, and kept up to date. The control measures identified will be issued to relevant employees. Training and information will be given as necessary.




Detailed procedures for evacuations including exit routes and information on good practice are held, and available on request to any member of staff. Equipment checks and evacuation drills will be held at regular intervals. Fire Warden will be appointed, and another member of staff will act as an evacuation "Roll Caller".

Staff will be trained in fire Safety and the use of fire equipment. They will also be briefed on the role of individuals and the action to take in the event of a fire or other emergency.

2.2 Risk Assessment

All significant hazards will be identified, and the associated risks assessed. Significant risks will be recorded. Simple, effective control measures will be agreed, with the involvement of the employees affected. Safe systems of work will be produced, and implemented in respect of all work activities where a significant Risk has been identified.

Written Assessments and Safety procedures will be carried out in all the production and administration areas. Specific Risk Assessments will include:

-  Manual Handling/PPE/COSHH/Risk
-  Fire
-  Machinery & Equipment including Fork Lift Trucks, Power & Hand Tools

2.3 First-Aid

The Health and Safety (First-Aid) Regulations 1981 will be complied with and a team of persons will be trained and certificated to the necessary standard.

Details of the First Aiders will be displayed prominently for the benefit of all employees and visitors, and brought to the attention of all new employees at their Induction stage.

Stock levels of items required under the Regulations will be checked at regular intervals and boxes will be kept secure, yet quickly available when required. Special arrangements will be made to provide cover where employees work away from Company premises.

The Director Responsible for Health and Safety will maintain a register of certificated First Aiders, and will ensure that a minimum level of cover is provided at all times.

2.4 Accident Procedure

Details of all accidents will be recorded in the Accident Book, and where appropriate investigated by The managing director. Employees are required to assist with any investigation of accidents and/or dangerous occurrences that take place within their work area.

The requirements of RIDDOR will be followed in respect of any reportable accident or dangerous occurrence (see 2.5).

2.5 Statutory Notification of Accidents/Dangerous Occurrences

When a specified injury or dangerous occurrence has occurred, the HSE will be notified immediately and the accident report form F2508 will be completed and sent within 10 days of notification. Others to be notified as soon as possible are, Stallard Kane Associates Ltd, and the Company's insurers.

Notifiable occupational diseases will be reported to the HSE on report form F2508A.

Where a person is absent from work or unable to perform their normal working duties as a result of a work related incident/accident over 7 consecutive days, the HSE Incident Control Centre must be notified within 15 working days from the day of the accident.

Please note it will still be a requirement to record all over 3 day accidents just no longer report them to the HSE. The entry in to the company accident book of over 3 day accidents will be a sufficient means of recording them.

All reportable accidents or dangerous occurrences will be investigated and a report issued. The BPCA will be informed and asked to assist with the investigation and give advice and guidance.

Action considered necessary to prevent a recurrence will be taken, and a report submitted to the enforcing authority.

THE REPORTING OF INJURIES, DISEASES AND DANGEROUS OCCURRENCES REGULATIONS 2013

These regulations require certain accidents and dangerous occurrences at work to be notified to the Local Authority, and a guideline is set out on the following page:

ACCIDENTS WHICH REQUIRE IMMEDIATE REPORTING TO THE LOCAL H.S.E.

Work-related accidents

For the purposes of RIDDOR, an accident is a separate, identifiable, unintended incident that causes physical injury. This specifically includes acts of non-consensual violence to people at work.

Please note: Not all accidents need to be reported, a RIDDOR report is required only when:

- 🌀 the accident is **work-related**; and
- 🌀 it results in an injury of a type which is **reportable** (as listed under 'Types of reportable injuries').

When deciding if the accident that led to the death or injury is work-related, the key issues to consider are whether the accident was related to:

- 🌀 the way the work was organised, carried out or supervised;
- 🌀 any machinery, plant, substances or equipment used for work; and
- 🌀 the condition of the site or premises where the accident happened.

If none of these factors are relevant to the incident, it is likely that a report will not be required.

Types of reportable injury

Deaths

All deaths to workers and non-workers must be reported if they arise from a work-related accident, including an act of physical violence to a worker. Suicides are not reportable, as the death does not result from a work-related accident.

Specified injuries to workers

The list of 'specified injuries' in RIDDOR 2013 (regulation 4) includes:

- 🕒 a fracture, other than to fingers, thumbs and toes;
- 🕒 amputation of an arm, hand, finger, thumb, leg, foot or toe;
- 🕒 permanent loss of sight or reduction of sight;
- 🕒 crush injuries leading to internal organ damage;
- 🕒 serious burns (covering more than 10% of the body, or damaging the eyes, respiratory system or other vital organs);
- 🕒 scalpings (separation of skin from the head) which require hospital treatment;
- 🕒 unconsciousness caused by head injury or asphyxia;
- 🕒 any other injury arising from working in an enclosed space, which leads to hypothermia, heat-induced illness or requires resuscitation or admittance to hospital for more than 24 hours.

Over-seven-day injuries to workers

This is where an **employee, or self-employed person, is away from work or unable to perform their normal work duties for more than seven consecutive days** (not counting the day of the accident).

Injuries to non-workers

Work-related accidents involving members of the public or people who are not at work must be reported if a person is injured, and is taken from the scene of the accident to hospital for treatment to that injury.

There is no requirement to establish what hospital treatment was actually provided, and no need to report incidents where people are taken to hospital purely as a precaution when no injury is apparent.

If the accident occurred at a hospital, the report only needs to be made if the injury is a 'specified injury' (see above).

Reportable occupational diseases

Employers and self-employed people must report diagnoses of certain occupational diseases, where these are likely to have been caused or made worse by their work. These diseases include (regulations 8 and 9):

- 🕒 carpal tunnel syndrome;
- 🕒 severe cramp of the hand or forearm;
- 🕒 occupational dermatitis;
- 🕒 hand-arm vibration syndrome;
- 🕒 occupational asthma;
- 🕒 tendonitis or tenosynovitis of the hand or forearm;
- 🕒 any occupational cancer;
- 🕒 any disease attributed to an occupational exposure to a biological agent.

Reportable dangerous occurrences

Dangerous occurrences are certain, specified 'near-miss' events (incidents with the potential to cause harm.) Not all such events require reporting. There are 27 categories of dangerous occurrences that are relevant to most workplaces. For example:

- 🕒 the collapse, overturning or failure of load-bearing parts of lifts and lifting equipment;
- 🕒 plant or equipment coming into contact with overhead power lines;
- 🕒 explosions or fires causing work to be stopped for more than 24 hours:

Certain additional categories of dangerous occurrences apply to mines, quarries, offshore workplaces and certain transport systems (railways etc). For a full, detailed list, refer to the online guidance at: www.hse.gov.uk/riddor.

Reportable occupational diseases

Employers and self-employed people must report diagnoses of certain occupational diseases, where these are likely to have been caused or made worse by their work. These diseases include (regulations 8 and 9):

- 🕒 carpal tunnel syndrome;
- 🕒 severe cramp of the hand or forearm;
- 🕒 occupational dermatitis;
- 🕒 hand-arm vibration syndrome;
- 🕒 occupational asthma;
- 🕒 tendonitis or tenosynovitis of the hand or forearm;
- 🕒 any occupational cancer;
- 🕒 any disease attributed to an occupational exposure to a biological agent.

Reportable gas incidents

If you are a distributor, filler, importer or supplier of flammable gas and you learn, either directly or indirectly, that someone has died, lost consciousness, or been taken to hospital for treatment to an injury arising in connection with the gas you distributed, filled, imported or supplied, this can be reported online.

If you are a gas engineer registered with the Gas Safe Register, you must provide details of any gas appliances or fittings that you consider to be dangerous to the extent that people could die, lose consciousness or require hospital treatment. This may be due to the design, construction, installation, modification or servicing, and could result in:

- 🔌 an accidental leakage of gas;
- 🔌 inadequate combustion of gas; or
- 🔌 inadequate removal of products of the combustion of gas.

Exemptions

In general, reports are not required (regulation 14) for deaths and injuries that result from:

- 🔌 medical or dental treatment, or an examination carried out by, or under the supervision of, a doctor or registered dentist;
- 🔌 the duties carried out by a member of the armed forces while on duty; or
- 🔌 road traffic accidents, unless the accident involved the loading or unloading of a vehicle;
- 🔌 work alongside the road, e.g. construction or maintenance work;
- 🔌 the escape of a substance being conveyed by the vehicle; or a train.

Recording requirements

Records of incidents covered by RIDDOR are also important. They ensure that you collect sufficient information to allow you to properly manage health and safety risks. This information is a valuable management tool that can be used as an aid to risk assessment, helping to develop solutions to potential risks. In this way, records also help to prevent injuries and ill health, and control costs from accidental loss.

You must keep a record of:

- 🔌 any **accident, occupational disease or dangerous occurrence** which requires reporting under RIDDOR
- 🔌 any other occupational accident causing injuries that result in a worker being away from work or **incapacitated for more than three consecutive days** (not counting the day of the accident but including any weekends or other rest days). You do not have to report over-three-day injuries, unless the incapacitation period goes on to exceed seven days.

If you are an employer who must keep an accident book, the record you make in this will be enough.

You must produce RIDDOR records when asked by HSE, local authority or ORR inspectors.

2.6 Equipment and Maintenance

All new and existing equipment and facilities will be sufficiently designed, constructed and installed so as to be safe and without Risk to the Health and Safety of employees.

An adequate planned maintenance system will be operated, and records maintained. Safe systems of work will be used and updated, such that protection against foreseeable maintenance hazards is provided.

All legally required maintenance, testing and inspections will be carried out and records kept in accordance with statutory provisions, insurer and fire authorities approved codes.

Only qualified electricians are permitted to carry out work on electrical wiring and apparatus, using safe systems of work.

2.7 Personal Protective Equipment (PPE)

Responsibilities: Directors will be responsible for ensuring that only PPE to the correct standards has been issued and used.

Directors will ensure that all persons under their control are equipped with, and use correctly, any PPE provided to them. They will also ensure that Risk Assessments relating to their work are reviewed to enable them to identify what Safety precautions (including PPE) should be in place.

PPE Assessment: In accordance with the Personal Protective Equipment Regulations 1992, an Assessment of the PPE requirements of each employee will be made using the PPE issue record form. For the purposes of co-ordinating Safety Management, the PPE Assessment will be included in the Company's general Assessment procedure detailed below.

It should be noted at this point that PPE would be used only as a last resort measure.

Where a hazard to an employee is identified, though the exact Risk level is not known, then that employee will be given the maximum possible protection until an adequate Risk Assessment has been carried out.

PPE Correct Standards: All personal protective equipment purchased by the Company will be used to the correct BS or EN standard, equipment which is not CE marked will not be used.

The Managing Director will ensure that the correct standard equipment is being purchased, issued and signed for on the appropriate form.

Issue of PPE: Employees will be issued with all necessary PPE relating to the hazards from their work activity or as a result of the findings of any Risk Assessment which relates to their work environment. Where an employee makes a reasonable request for additional equipment, this will be reviewed by their supervisor and where appropriate the equipment will be supplied.

Replacement of Equipment: All PPE will be replaced on a new for old basis. Re-issue or replacement of worn out PPE will be requested using the record form, which will be held in the office, in order that usage can be monitored.

Any PPE which is so worn or damaged that it no longer affords adequate protection must be replaced before the operative is allowed to continue work.

PPE which has a shelf life or maximum usage period will be replaced in accordance with manufacturer's instructions.

Training – Correct Use: Employees who are required to use PPE to ensure their Safety will be given training in its correct use. All training will be provided in accordance with SMP5.3.

Personal Preference: Whilst every reasonable effort will be made to ensure that PPE satisfies requirements, the Company cannot guarantee to satisfy individual's preference. Once issued PPE must be worn. It will not be left to the operative's discretion.

Damage / Misuse: It will be the responsibility of the employee to report any faulty or damaged Safety equipment to their Director. It must then be exchanged as soon as possible.

Employees must not alter, deface or otherwise misuse any Safety equipment supplied to them.

Maintenance: It will be the responsibility of each employee to ensure that PPE is maintained in good order.

In order that Operatives can be correctly equipped with Safety equipment at short notice, a reserve stock will be held by the office.

2.8 Electricity

Electrical equipment will be properly maintained to ensure that it is safe for normal use. All portable appliances will be examined prior to first use, then examined, and tested regularly thereafter. A register of appliances will be produced and kept up to date. The findings of inspections and tests will be recorded. Only qualified electricians are permitted to carry out work on electrical wiring and apparatus using safe systems of working.

Where practicable, equipment will be switched off when not in use, or on leaving the premises. All cabling, plugs and connections will be properly organised, inspected, recorded and maintained to minimise any Risks, in accordance with the Regulations.

Employees will not carry out maintenance on electrical equipment or plugs without prior authority and training. Employee's personal electrical apparatus is not to be used on Company premises without prior permission.

The mains electricity supply will be inspected, and a certificate of test obtained from a "Competent Person" in accordance with the timescale laid down in the Regulations.

2.9 Premises

Environment, Welfare and other related facilities will be maintained to the standard required by the Health and Safety at Work etc Act 1974 and the Workplace (Health, Safety and Welfare) Regulations 1999. Particular attention will be given to the general fabric, temperature, ventilation, purity of air and water supplies, lighting, sanitary conveniences and noise.

2.10 Control of Substances Hazardous to Health (COSHH)

The requirements of the COSHH Regulations 2004 and other related legislation will be satisfied. All necessary precautions will be taken in the use, storage and transportation of any material or substance. The least hazardous type of any substance will be used or purchased in order to

minimise any associated Risk. There will be regular Assessments and monitoring to ensure that this is achieved.

No new substances will be introduced into the workplace until the information regarding possible hazards and the necessary precautions to be observed have been fully evaluated by a competent person.

Responsibilities: The Directors will be responsible for ensuring that this section is implemented and that all employees are given adequate information about any substances which are to be used.

Directors must ensure that the significant findings of any COSHH Assessment, including the Safety precautions to be adopted, are communicated to all operatives who will be exposed to the substances.

All employees are responsible for ensuring that they have read and understood any COSHH Assessment relating to their working activity.

Hazardous Substances Register: The Directors will create and maintain a Hazardous Substance Register. The Register will contain Hazardous Data Sheets for every substance purchased by the Company. These data sheets will be supplied by the supplier of the substance and must be formatted so as to provide clear Health and Safety information, including first aid, fire precautions, emergency action, correct storage and safe handling.

COSHH Assessment: A COSHH Assessment will be carried out for every substance being used by the company. All COSHH Assessments will be carried out on the standard form. The format of the Assessment is such that it takes the following factors into account:

- 🌀 Type of Substance
- 🌀 Work Location/Environment
- 🌀 Work Duration

All Assessments will be in writing and will be held available for inspection at all times at an appropriate point in the workplace. A central file will be created which will contain master copies of all Assessments carried out.

COSHH Assessments will be reviewed at the following times:

- 🌀 If the work environment changes
- 🌀 If it is requested by the operative
- 🌀 In any case every 12 months

Any review must be recorded on the Assessment with a review date and the name of the person who carried out the review.

Substance Substitution: Wherever possible hazardous substances will be replaced with less hazardous ones. It will be the responsibility of the Managing Director to investigate the availability of replacement substances and put them to use as soon as possible. Substances must also be assessed as necessary. Advice from the BPCA shall be sought where applicable.

Safety Precaution Advice: Any Safety Precautions recommended as a consequence of a COSHH Assessment must be adhered to at all times while the substance is in use.

Health Surveillance: All hazardous substances will be stored in correct storage facilities away from the work area. Storage facilities will be kept locked at all times and will be constructed as such that they do not pose a Risk to the substance and will not allow any spillage to leak out.

Safety notices will be posted on all storage facilities warning of the dangers associated with the substances being stored together.

The Hazard Safety Data Sheets for all substances being stored will be available at the storage facility.

Only the minimum quantity required for immediate work will be removed from the storage facility. Persons required to handle hazardous substances will be given training in both correct handling techniques and Safety precautions for hazardous substances.

All spillages will be soaked up using sand or chemical dry granules, contaminated materials are then to be disposed of in accordance with local authority rules. Hazardous substances are not allowed to enter any drain or watercourse.

The Director is to be informed of any substantial spill immediately.

Information and Training: All employees who may be exposed to any Hazardous Substances will be informed of the existence of the Hazardous Substances Register and COSHH Assessment files at their Safety Induction.

They will be instructed to use these documents as reference to ensure that Safety precautions are adhered to.

2.11 Contractors/Sub-Contractors

It is the responsibility of the Contractor/Sub-contractor to ensure that the Health, Safety and Welfare of Elite Pest Management Ltd staff, visitors and others is not put at risk from their work activities and practices, and that safe systems of work are adhered to at all times.

Where contractors are to carry out work for EPM Ltd, they will be asked to provide evidence of Health and Safety competence in advance via a Sub-Contractors Assessment. Copies of Risk Assessments, COSHH Assessments, Method Statements, and any other necessary documentation, must be submitted and approved by and EPM responsible for H & S, as confirmation that risks to Health and Safety are being properly managed. All contractors will report to the prearranged designated person prior to commencing work.

The activities of contractors whilst they are on site will be monitored to ensure that their methods of work are safe, and do not put the Safety of Elite Pest Management Ltd employees at risk. Only BPCA members to provide pest management tasks.

2.12 Drugs and Alcohol

In industry generally there has been a move to greater controls and in keeping with this Elite Pest Management Ltd has adapted a policy in relation to the consumption of alcohol and drugs.

The company's policy on alcohol is intended to be a positive approach towards maintenance of the highest standards of Safety in the workplace. It is also intended to benefit the Health & Safety of each individual.

Any employee who feels that they may have a problem relating to drugs or alcohol should immediately seek help from the Director Responsible for Health and Safety. This information will be treated in the strictest confidence. The Company will endeavour to offer any assistance available at the time.

Employees must not attend work whilst under the influence of alcohol or non-prescriptive drugs.

Staff must not consume alcohol or non-prescriptive drugs on the premises.

Staff must not return to work after breaks under the influence of alcohol or non-prescriptive drugs.

CONSUMPTION OF ALCOHOL IN BREACH OF THIS POLICY IS A DISMISSABLE OFFENCE.

2.13 Smoke-free Policy

Purpose

This policy has been developed to protect all Employees, Contractors, Customers and Visitors from exposure to second-hand smoke and to assist compliance with the Smoke- Free (Premises and Enforcement) Regulations (England) 2006

Exposure to second-hand smoke, also known as passive smoking, increases the Risk of lung cancer, heart disease and other illnesses. Ventilation or separating smokers and non-smokers within the same airspace does not completely stop potentially dangerous exposure.

Policy

It is the policy of Elite Pest Management Ltd that all of our workplaces including Vehicles are completely Smoke Free and all employees have a right to work in a Smoke Free Environment. The policy shall come into effect on 1st of July 2007 and be reviewed on an annual basis

Smoking is prohibited throughout the entire Workplace including Vehicles with no exceptions. This policy applies to all Employees, Consultants, Contractors, Customers or Members and Visitors.

Implementation

Overall responsibility for policy implementation and review rests with the Managing Director of Elite Pest Management Ltd. All staff are obliged to adhere to, and facilitate the Implementation of the Policy.

The Managing Director shall inform all existing Employees, Consultants and Contractors of the policy and their role in the implementation and monitoring of the policy. The Managing Director or the person Delegated, must inform during Induction all new personnel of the No Smoking Policy. Appropriate 'No smoking' signs will be clearly displayed at the entrances to and within the premises.

Non-compliance

Local disciplinary procedures should be followed if a member of staff does not comply with this policy. Those who do not comply with the Smoke-Free (Premises and Enforcement) Regulations (England) 2006 are also liable to a fixed penalty fine and possible criminal prosecution.

2.14 Working at Height

The company recognises and accepts its responsibility under the Working at Height Regulations 2005 and shall as far as reasonably practicable ensure:-

- ④ All work at height is properly planned and organised.
- ④ All work at height takes account of weather conditions that could endanger health and safety.
- ④ Those involved in work at height are trained and competent.
- ④ The place where work at height is done is safe.
- ④ Equipment for work at height is appropriately inspected.
- ④ The risk from fragile surfaces are properly controlled and
- ④ The risks from falling objects are properly controlled and take account of the risk assessment carried out under Regulation 3 of the Management of Health & Safety at Work Regulations 1999.

2.15 Vibration at Work

The company realises its obligations under the Control of Vibration at Work Regulations 2005.

- ④ The company will apply the action values and limit values for daily exposure to vibration (regulation 4)
- ④ The company will complete risk assessments on all equipment or activities that produce vibration values and limit values as per the regulation. (regulation 5)
- ④ The company will eliminate or, where elimination is not reasonably practicable, reduce the exposure to vibration to as low as is reasonably practicable (regulation 6(1))
- ④ The company will instigate a program of measures to be taken at the action values to reduce exposure to vibration to as low as reasonably practicable. (regulation 6(2))
- ④ The company will complete weekly averaging of exposure to vibration in specified circumstances. (regulation 6(5))
- ④ The company will provide health surveillance for all employees affected by vibration at work.
- ④ The company will fulfil its obligations for providing information, instruction and training with regard to vibration at work.

2.16 Stress

Elite Pest Management Ltd is committed to protecting the health, safety and welfare of its staff and recognises that workplace stress is a health & safety issue. The importance of identifying and reducing workplace stressors is also acknowledged.

This includes

Improving the organisational environment through effective and consistent management

- 🌀 Enabling individuals to cope successfully with their work
- 🌀 Providing support to employees whose health and well-being are affected by stress
- 🌀 Manage and control factors which might result in excessive or sustained levels of stress
- 🌀 Increase awareness of stress and its causes and methods to combat it
- 🌀 Assist staff in managing stress in themselves and others

As far as reasonably practicable the company will

- 🌀 Provide managers with advice and support to help identify specific causes of stress
- 🌀 Develop programmes for those with people management responsibilities to promote good management and team building skills
- 🌀 Provide support through the Employee Assistance Programme
- 🌀 Provide suitable training such as time management, assertiveness and dealing with difficult/sensitive situations
- 🌀 Monitor the occurrence and levels of absence associated with stress

2.17 Asbestos

Relevant legislation includes the Control of Asbestos at Work Regulations 1987, the Asbestos (Prohibitions) Regulations 1992, the Asbestos (Licensing) Regulations 1983, the Control of Asbestos in the Air Regulations 1990 and the Special Waste Regulations 1996.

In compliance with the Control of Asbestos at Work Regulations 2004, and subsequent legislation, adequate information, instruction and training is given to employees to enable them to be aware of the health hazards of asbestos; how controls, protective equipment and work methods can reduce these hazards; and the correct use of maintenance of control measures.

2.18 Computers

In accordance with the Health and Safety (Display Screen Equipment) Regulations 1992, the following procedures will be followed:

"Users" of display screen equipment shall be individually identified by the office manager. The office manager shall ensure that all "users" have received sufficient instruction to allow them to operate the equipment provided, including the adjustment of screens, keyboards, chairs, foot rests, blinds, etc. Particular attention should be given to minimising reflection and glare.

"Users" shall be entitled to request an appropriate eye and eyesight test. Where "special" corrective appliances are needed; a special pair of spectacles for display screen work may be prescribed. Any cost arising from these tests and appliances will be borne by Elite Pest Management Ltd

COVID- 19 POLICY STATEMENT



3. Policy Statement

EPM Ltd recognises and accepts its responsibility as an employer and provider of services and will support the provision of a safe and healthy workplace environment for all staff and such other persons that may be affected by its activities.

We will adopt health and safety arrangements under COVID-19 in line with Health & Safety legislation, and in consideration of government guidelines.

Good health and safety management will be an integral part of the way that EPM Ltd operates and will be considered across all work activities.

This addendum will be reviewed regularly and is included with the main Health and Safety Policy.

3.1 Policy Aim

To ensure that the risks of COVID-19 presented to staff are reduced to an acceptable level.

3.2 Policy Objectives

- 🌀 To conduct all our activities safely and in accordance with legislative standards and in consideration of government guidance.
- 🌀 To provide safe working conditions.
- 🌀 To ensure a systematic approach to the identification of risks and the allocation of resources to control them.
- 🌀 To openly communicate on health safety and welfare.

3.3 ORGANISATIONAL RESPONSIBILITY

EPM Ltd will: Apply and communicate sensible risk management and safe working practices. This will involve:

- 🌀 Regular assessment of hazards and associated risks.
- 🌀 Implementing preventive and protective control measures against those risks to an acceptable/ tolerable level.
- 🌀 Provision of information, instruction, training, and home working equipment.
- 🌀 Review of risk assessments, policies, procedures and practices at regular interval and where additional information is gained through changes in government guidance, monitoring or following an incident.
- 🌀 Ensure that staff are informed and instructed to ensure competence and awareness of health & safety measures required during COVID-19.
- 🌀 Communicate regularly and effectively with staff and stakeholders about EPM's response to COVID-19.

- 🌀 Put in place any flexible working arrangements needed to accommodate personal needs and commitments whilst supporting the delivery of the EPM Policy.
- 🌀 Implementing measures to check on staff wellbeing.

Staff will be asked to:

- 🌀 Keep in touch with EPM management in relation to personal circumstances so that managers are best placed to support any challenges that arise.
- 🌀 Take personal responsibility to ensure that they have fully read and adhered to the following guidelines to protect themselves as far as possible
- 🌀 Read the most up to date copy of the shared risk assessments which will be emailed to staff with any updates.
- 🌀 Follow government guidance regarding the use of PPE.

EPM Ltd will continue to work in line with Government guidelines on matters of social distancing and safe practice.



Mick Kilburn
Managing Director
January 2026

Environmental Policy



The Company recognises its environmental duties under the Environmental Protection act 1990 and the Waste (England and Wales) Regulations 2011, the Director Responsible for Health, Safety and Environmental Issues Mr. Mick Kilburn recognises that he has a responsibility to take an environmentally (and socially) responsible approach both to existing activities and to possible new developments.

The Company, so far as is reasonably practicable, proposes to pay particular attention to:

- a) To minimise disturbance to the local and global environment, and to the local communities and wildlife.
- b) Follow the waste management hierarchy as outlined in the Waste (England and Wales) Regulations 2011. The company will follow the hierarchy outlined below.
 - e Prevention
 - e Preparing for re-use
 - e Recycling
 - e Recovery
 - e Disposal.
- c) To minimise use of energy and raw materials and to adhere to the principles of sustainability.
- d) To consider the environment in the design of processes and products and the maintenance of equipment.
- e) To provide information on the use and final disposal of products.
- f) To ensure that all employees and suppliers are adequately informed about the company's environmental policy.
- g) To minimise the use of product related materials and services such as packaging or transport.

In order that the Company can achieve those objectives, it is important that employees recognise their duty, whilst at work, to take reasonable care of the environment. Employees should also co-operate fully with the Company or anyone else concerned, to ensure that their legal and moral obligations are performed or complied with.

A handwritten signature in black ink, appearing to read 'Mick Kilburn', written in a cursive style.

Mick Kilburn
Managing Director
January 2026

